



Trending NOW



February 15, 2025

NEWS

Downtown Streetscape Project



At the January 7 Village of Bartlett Board committee of the whole meeting, Christopher B. Burke Engineering, Ltd. (CBBEL) and Teska Associates presented their design for a downtown Metra/Town Center/Depot Museum/Railroad Avenue landscape enhancement and streetscape project. Also discussed was the design/build route as the best way to implement this project.

CBBEL incorporated the ideas and suggestions of the board into the Downtown Streetscape Improvements Design-Build agreement with Burke, LLC that will be up for a vote at the February 18 village board meeting.

This project includes:

- Continuing the sidewalk and brick paver pattern along Railroad Avenue and Main Street, extending from More Brewing to Village Hall
- Updating of landscape and hardscape at the Depot Museum and area south of the tracks between Oak and the Metra Station
- Complete renovation of the Town Center Plaza, including a new water feature, updated landscaping, seating, and improved lighting

The contract total amount also accounts for allowances for a sound system, extension of a stream, signage, swing seating, and colored uplighting options in case the village decides to add any additional items to the project.

Triple Award Winner



If you are searching for the perfect venue for your special day, look no further than Bartlett Hills Golf Club. For the first time, Bartlett Hills has earned the trifecta in wedding website awards for 2025.

The golf club first was named "Best of Zola 2025" and the following week was recognized with the "Wedding Wire 2025 Couples' Choice Award" and "The Knot Best of Weddings 2025."

Bartlett Hills Golf Club

Dinner & Whiskey Tasting

Bourbon aficionados, enjoy an evening celebrating your favorite spirit at Bartlett Hills Golf Club, 800 W. Oneida Avenue, on Saturday, 3/1 from 6 to 10 p.m.

Complete bourbon whiskey tasting featuring Blue Run, Angels Envy, Bulleit and Makers Mark bourbons. Butler-style passed hors d'oeuvres; full steak buffet with soup and salad; elaborate sweet table. Raffle prize giveaway, cigars and cash bar available. Lounge singing entertainment with Steve Rogalla.

Reservations Only - \$75 per person (tax additional/gratuity not included). Please call 630- 213-3103 or email Evan@bartletthills.com.



Did You Know?

...the Village of Bartlett participates in the National Flood Insurance Program (NFIP) and has adopted flood hazard area protection standards. As a public service, the planning & development services (PDS) department will provide the following information upon request:

- Basic flood map information - 1. Special Flood Hazard Areas (SFHA); 2. Flood zone, base elevation and panel reference information from the Flood Insurance Rate Map (FIRM)
- Floodway locations and regulatory requirements for development in a floodway
- Wetland and open space information and regulations that may prohibit development in these areas.

To request flood map information, contact the PDS department at 630-540-5920.

REMINDERS



Bartlett Village Hall administrative offices will be closed Saturday, 2/15 and Monday, 2/17 for the Presidents Day

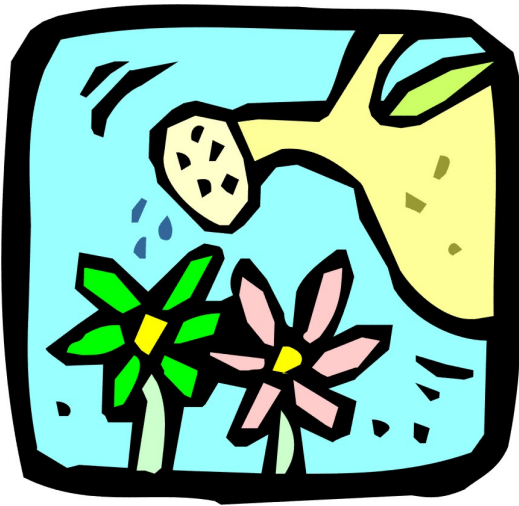


The National Weather Service is forecasting bitterly cold temperatures for much of next week, with dangerous, below zero wind chills possible during the early morning hours of Monday and Tuesday.

holiday. The Bartlett Depot Museum also will be closed on Saturday, 2/15.

However, the Bartlett Connect mobile app gives you access to village hall 24/7. Make service requests, sign up for push notifications, and link to the village website, where you can pay water bills, apply for permits, search information and more.

Bartlett Connect is available for free in the Apple and Google Play online stores.



Mother Nature keeps reminding us that winter is not ready to call it quits, but that doesn't mean it's too early to start thinking ahead to spring!

If you're passionate about gardening, consider joining the Bartlett Community Garden for the 2025 season. It provides gardeners with the opportunity to enjoy a common space, where they can share a hobby with fellow community members.

Located at Koehler Field, the fee for the season is \$35 for residents and \$55 for non-residents. For more information or to sign up, visit the Bartlett Community Garden page on the village website.

**Bartlett Community
Garden**

To protect yourself and your family from the many hazards of winter weather follow these safety tips.

- Wear several layers of loose fitting, lightweight, warm clothing rather than one layer of heavy clothing.
- Wear a hat and mittens instead of gloves.
- Cover your mouth with a scarf to protect your lungs.
- Make sure small children, infants, and the elderly stay warm. They are more vulnerable to the cold.
- Where possible, try to keep one room in your home heated to 68-70 degrees.
- Avoid drinking alcoholic beverages.
- Eat high energy foods and drink warm beverages.
- Beware of overexertion; shoveling snow or pushing disabled cars can be very strenuous and should only be done by individuals in good health.

Safe heating tips

- Electric heaters can be hazardous and should be used with caution to prevent shock, fire, and burns. Follow the usage instructions and keep clothing and blankets away from heating elements.
- Carbon monoxide can kill. Be careful using fireplaces; make sure flues are clear and properly ventilated.
- Gas ovens, burners, and charcoal should never be used to heat your home.
- NEVER use generators in homes, garages, basements, crawl spaces, or other enclosed or partially enclosed areas, even with ventilation.

Safe use of the car in cold weather

- Make sure your car is in good operating condition before using it in extreme cold.
- Keep condensation (water) out of your gas tank by keeping the tank as full as possible.
- Maintain a storm kit in your car with items such as a cell phone and charger; blankets; extra clothing; jumper cables; a flashlight; high-calorie, non-perishable food; and

matches or a lighter.

- Plan your trip carefully. If winter weather conditions exceed your or your car's ability, don't travel.
- Tell someone your travel plans.
- Never leave the motor running when parked in an enclosed or partially enclosed space, such as a garage.

More Info at
ready.illinois.gov

Meetings & Events

TUESDAY, 2/18 @ 7 p.m.
[Village Board & Committee of the Whole Meeting](#)

WEDNESDAY, 2/19 @ 6:30 p.m.
[Tri-Village Garden Club Meeting](#)

FRIDAY, 2/21 @ 7 p.m.
[Casino Royale 2025](#)

TUESDAY, 2/25
[Dine to Donate Fundraiser](#)

FRIDAY, 2/28 @ 7 p.m.
[Beer, Spirits & Wine Tasting](#)

SATURDAY, 3/1 @ 9 a.m.
[1st Saturday Family Craft](#)

SATURDAY, 3/1 @ 6 p.m.
[Bourbon Night at Bartlett Hills](#)

See More Meetings & Events on the [Website Calendar](#). Please know that meeting agendas are not posted to the website until they are finalized, generally the week before the meeting date.

Help Shape the Future of Transportation

The Chicago Metropolitan Agency for Planning (CMAP) wants to hear from you! Take a new, 10-minute survey to share how you get from point A to point B, and how the area transportation system can be improved.

As CMAP leads development of the Regional Transportation Plan (RTP) — northeastern Illinois' blueprint for roads, rails, and trails over the next 30 years — your feedback will shape how local agencies improve transportation, reduce congestion, and build a more sustainable future for this region.

Responses will be accepted throughout 2025, giving everyone plenty of time to weigh in. Whether you're a daily commuter, a cyclist, or simply passionate about the future of the metropolitan Chicago community, your voice matters. Don't miss this opportunity to make a difference!

If you have questions about the RTP or the questionnaire, please reach out to rtp@cmap.illinois.gov.

Working together, can help create a transportation system that serves everyone.

Share How You Get Around

COMMUNITY SPIRIT



Donate new diapers, wipes and baby items to help moms and babies in the community. Donations accepted until February 28 at Bartlett Police Department, 228 S. Main Street. All donations will be given to the Hanover Township and the Wayne Township food pantries. If you have questions, call 630-837-0846.



SPONSOR A HEART!

The Bartlett Public Library Foundation is accepting donations until February 28 in support of the Patti Perkins Fund. Sponsor a heart at the Bartlett Public Library, 800 S. Bartlett Road, by making a monetary donation. Visit the library to donate in person or use the link below to visit the library's website.

Who Was Patti Perkins? Patti Perkins worked as the circulation manager at the Bartlett Public Library District until she retired in 1999 as a result of cancer. She was an avid employee and Bartlett community member, who in a note she left for her husband just prior to her death in January of 2000 requested donations to create a Women's Health Collection at the library; this money was used to create the Bartlett Public Library Foundation.

What is the foundation? Founded in 2000, the Bartlett Public Library Foundation was established to provide additional sources of revenue to enhance services and capital improvements that are not paid through property taxes.

The Bartlett Public Library Foundation is also holding a Dine to Donate fundraiser to benefit the Patti Perkins Fund at Pasta Mia on Tuesday, 2/25. Pasta Mia, 116 Bartlett Plaza, will donate a percentage of all dine-in and carry-out purchases to benefit the Bartlett Public Library Foundation's Patti Perkins Fund. A flyer must be turned in to your server at time of payment. Pick up a flyer at the library. For more information, visit the Bartlett Public Library website.

[Visit Bartlett Library Website](#)

QUICK LINKS

- * [Village of Bartlett Employment Opportunities](#)
- * [Learn more & sign up for Code Red Emergency Notifications](#)
- * [Learn about the Bartlett Connect mobile app](#)

228 S. Main Street
Bartlett, IL 60103
630-837-0800

bartlett.il.gov



Kevin Wallace, President
Lorna Giles, Clerk

Trustees
Raymond H. Deyne
Stephanie Gandsey
Dan Gunsteen
Adam J. Hopkins
Joe LaPorte
Renée Suwanski

Village of Bartlett IL | 228 S. Main Street | Bartlett, IL 60103 US

[Unsubscribe](#) | [Update Profile](#) | [Constant Contact Data Notice](#)



Try email marketing for free today!